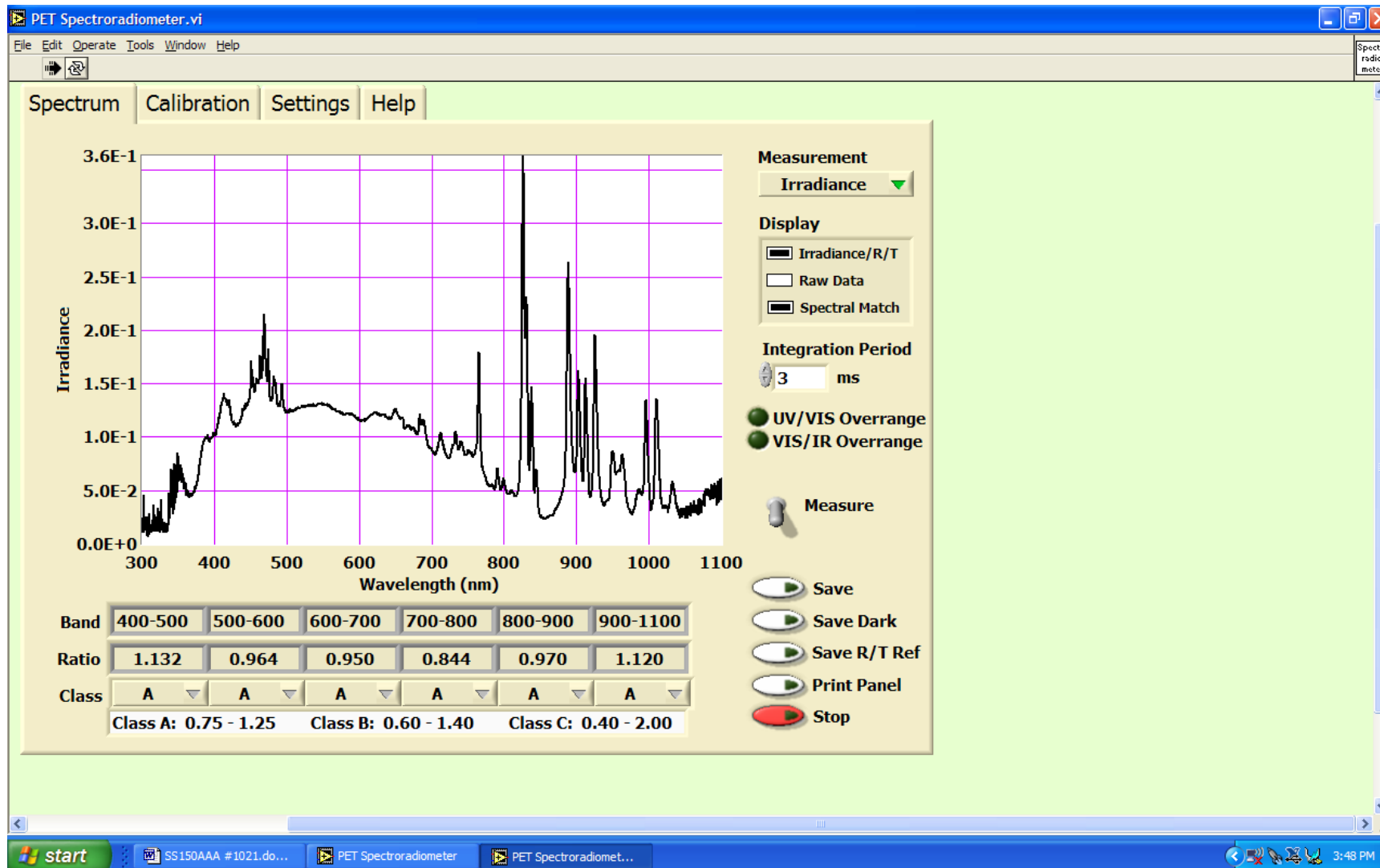
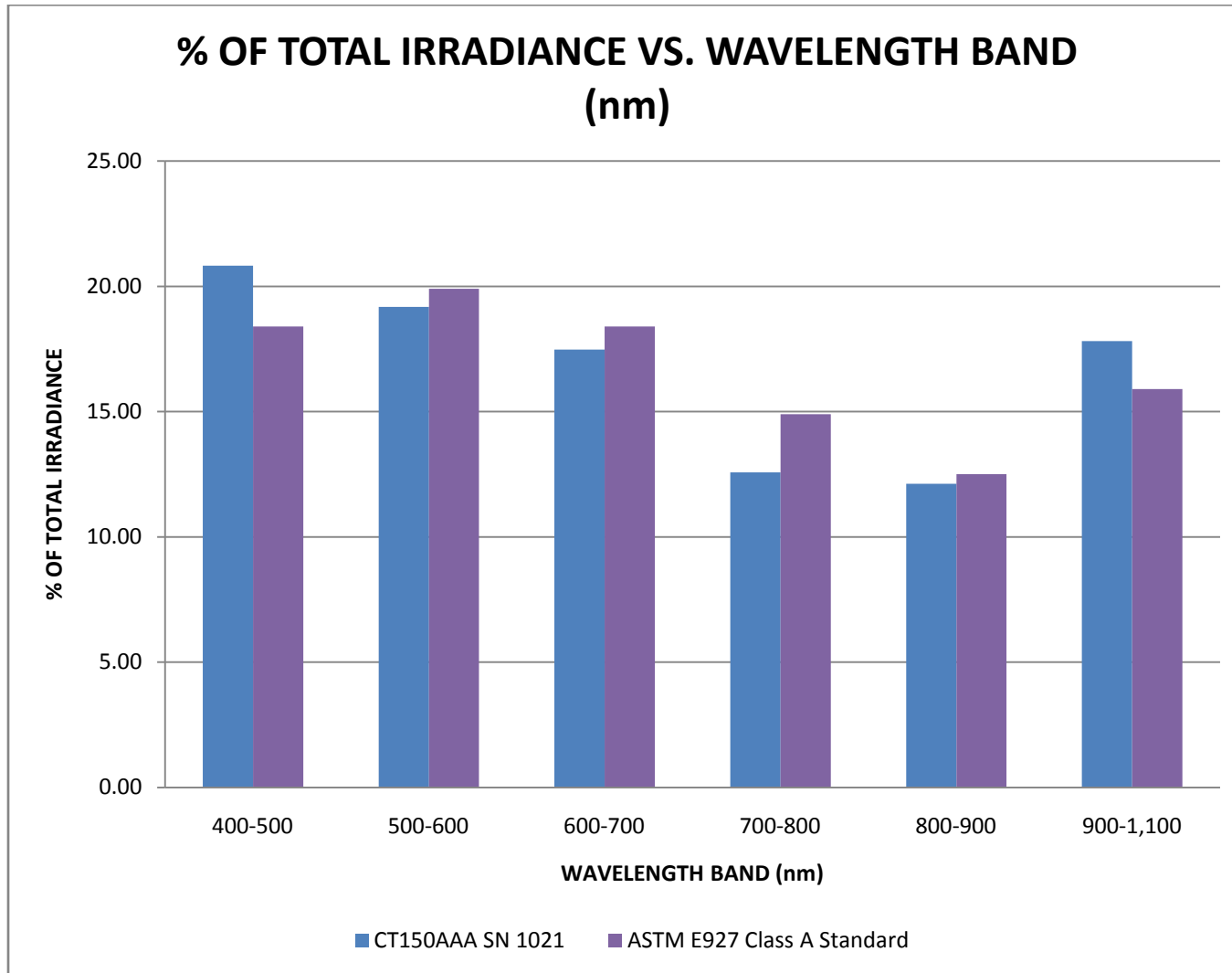
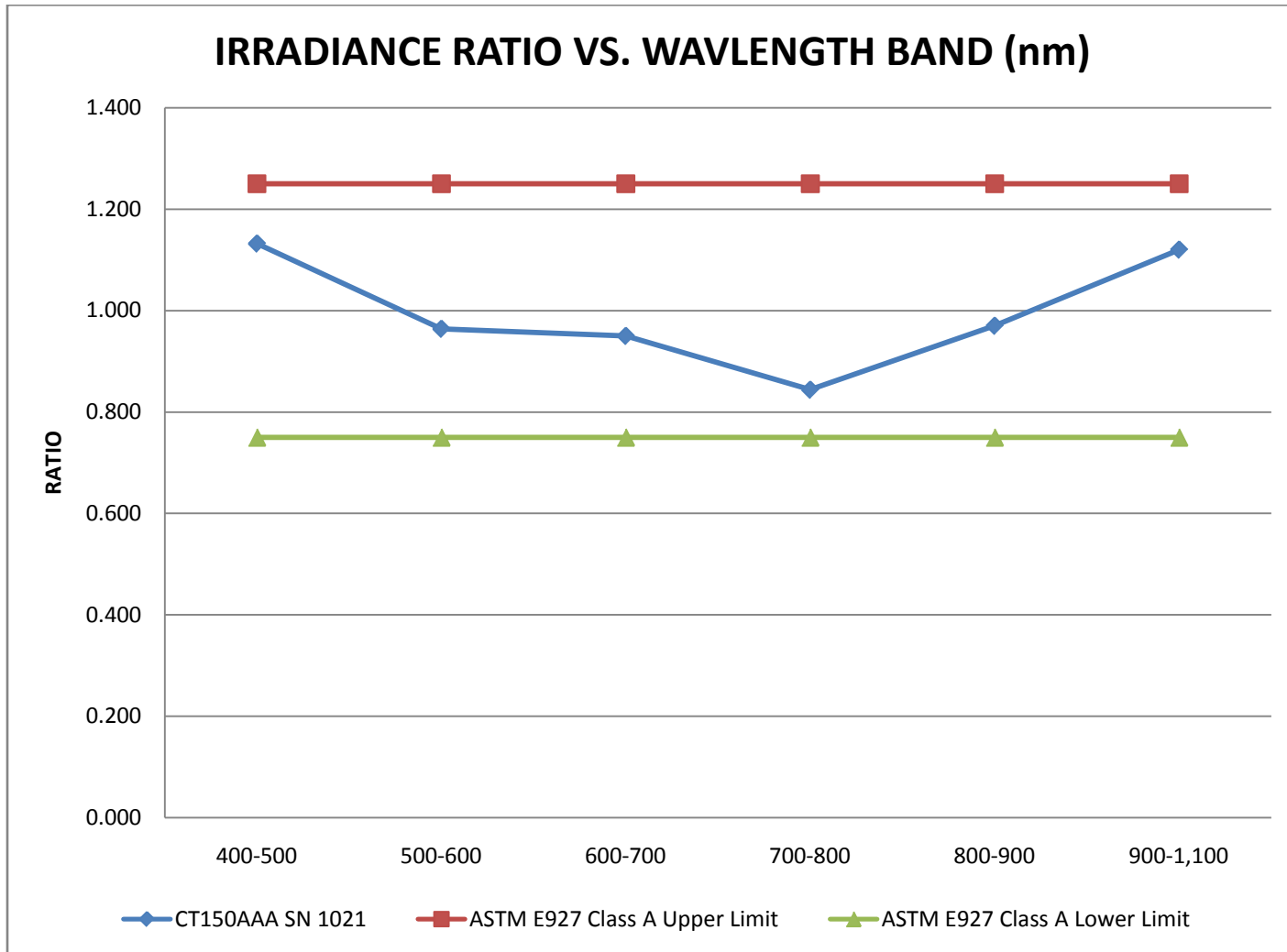


Final Test Report, May 7, 2010
Model CT150: Model SS150AAA Solar Simulator & Model CC-15, I-V Measurement.
SUNPREME, Sunnyvale, California

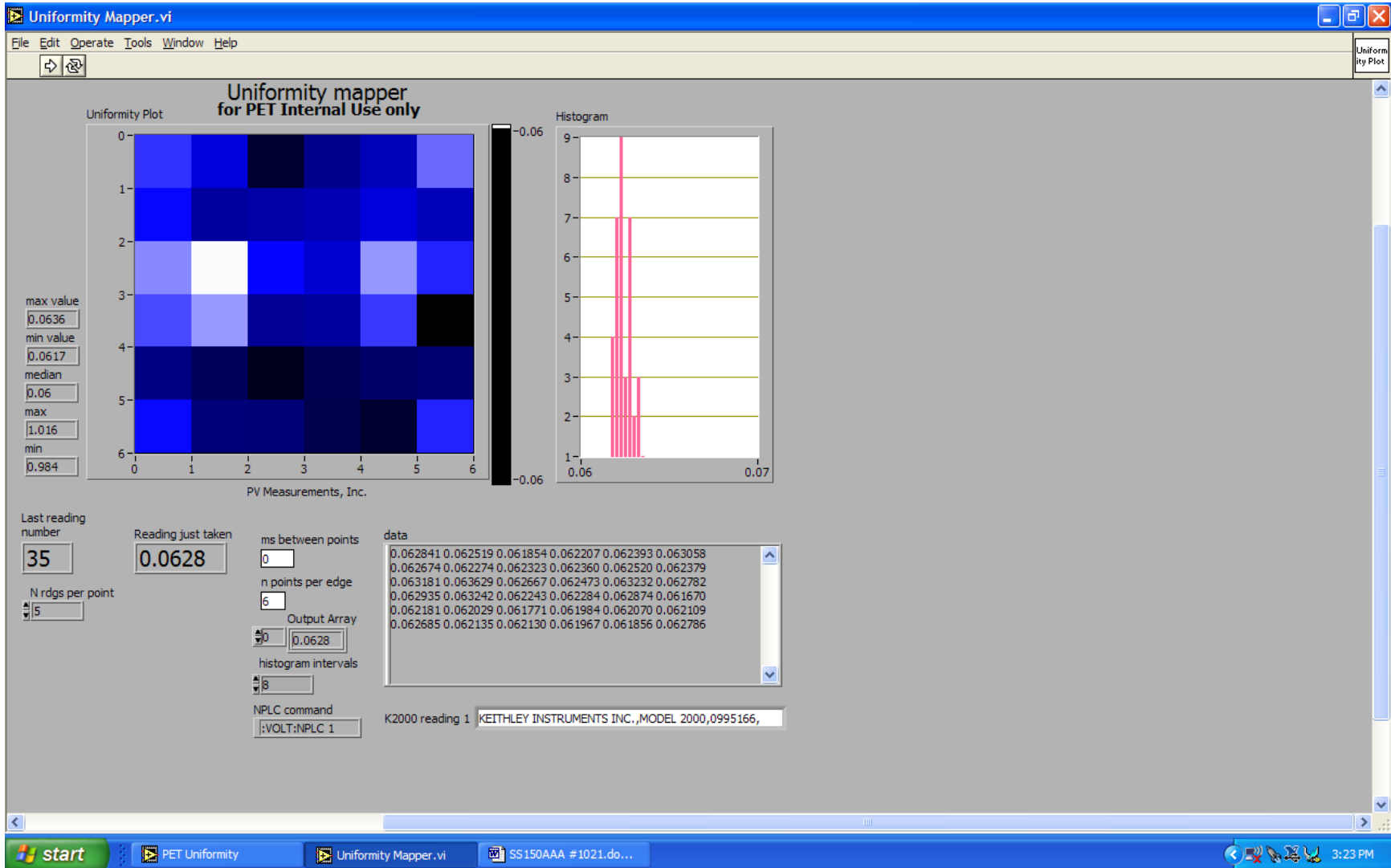


SPECTRAL MATCH= +13.2% TO -15.6 %: EXCEEDS ASTM E927CLASS A ($\leq 25\%$)



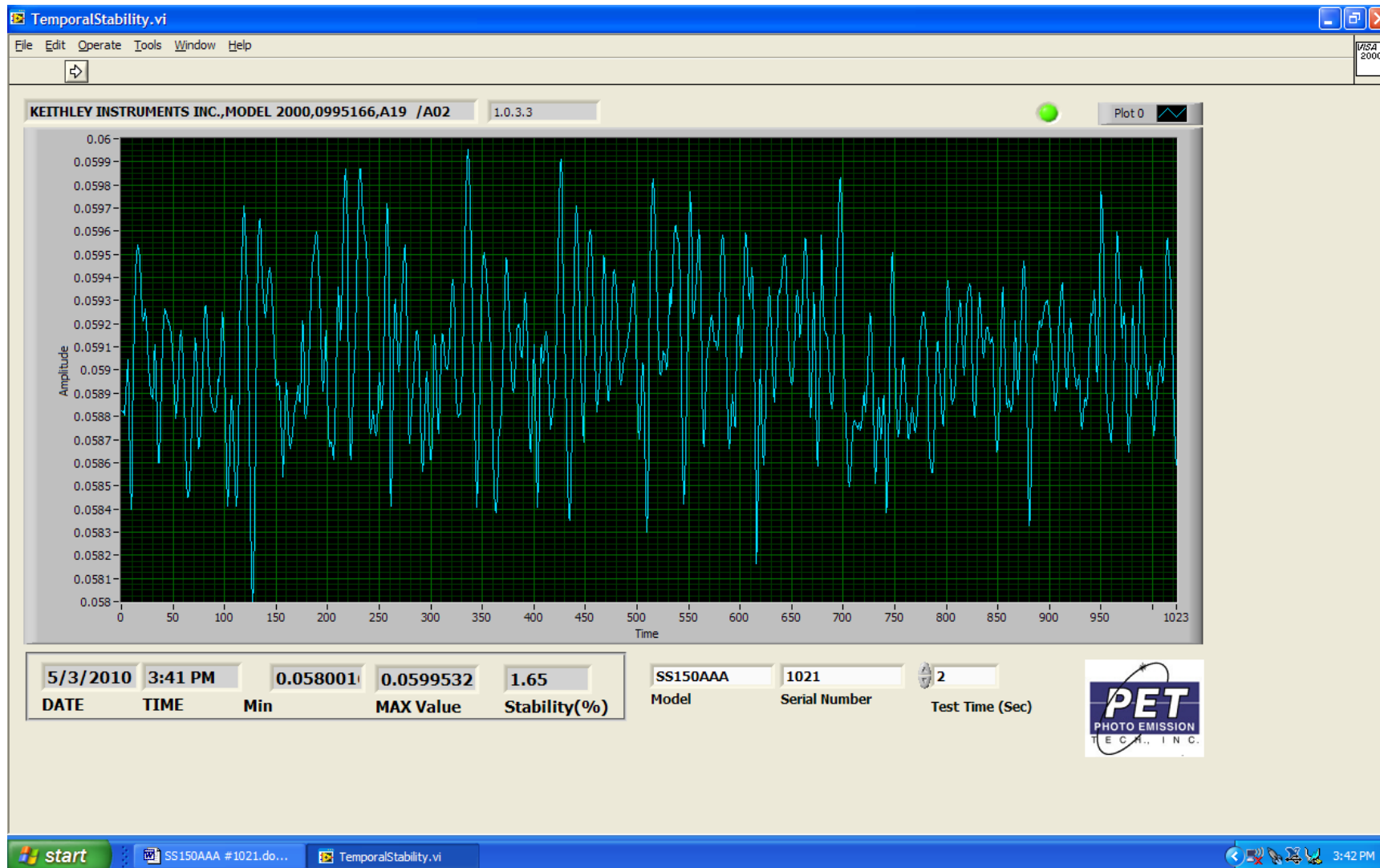


Final Test Report, May 7, 2010
 Model CT150: Model SS150AAA Solar Simulator & Model CC-15, I-V Measurement.
 SUNPREME, Sunnyvale, California



NON-UNIFORMITY= 1.50 %: BETTER THAN ASTM E927 CLASS A ($\leq 2\%$)

Final Test Report, May 7, 2010
Model CT150: Model SS150AAA Solar Simulator & Model CC-15, I-V Measurement.
SUNPREME, Sunnyvale, California



TEMPORAL STABILITY= 1.65%: BETTER THAN ASTM E927CLASS A ($\leq 2\%$)